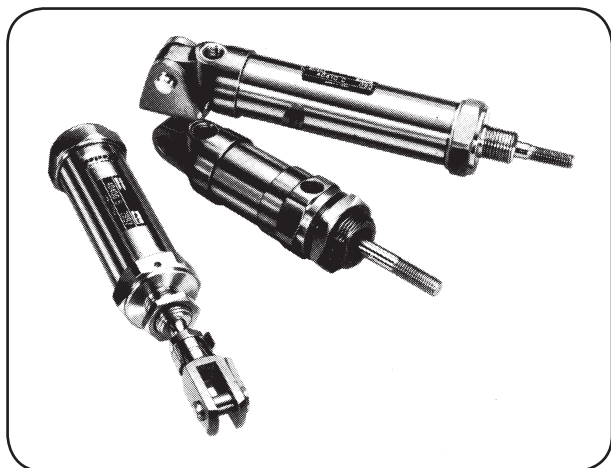


**Brass Midget Cylinders  
Clamp Cylinders  
Air Presses  
Rotary Feed Tables**



# 1" Midget cylinders



Single acting and Double acting cylinders Ø1"

Standard stroke lengths: see below

## Features

- Brass bodies and end caps
- Stainless steel piston rods
- Screwed end caps
- Full range of mountings
- Rugged design
- Non-standard strokes to order

## Technical specification

Pressure range

Single acting: 1 - 10 bar max

Double acting: 0 - 10 bar max


Temperature range

Nitrile: -10°C - + 80°C

Viton option: -10°C - + 180°C

Double acting:

Single acting - Spring retract: 

- Spring extend: 

For details contact Parker Technical Service

For dimensions see pages: 2-5

## Part nos.

Stroke		Double acting		Single acting, spring retract	Single acting, spring extend	Single acting, spring retract	Single acting, spring extend	Double acting, through rod
Inch	mm	Neck	Trunnion	Neck	Neck	Trunnion	Trunnion	Neck
1/2	12.7	491Y	492Y	40400Y	41400Y	40410Y	41410Y	41000Y
1	25.4	491A	492A	40400A	41400A	40410A	41410A	41000A
1 1/2	38.1	491AY	492AY	40400AY	41400AY	40410AY	41410AY	41000AY
2	50.8	491B	492B	40400B	41400B	40410B	41410B	41000B
3	76.2	491C	492C	40400C	41400C	40410C	41410C	41000C
4	101.6	491D	492D					41000D
6	152.4							
9	228.6	491J	492J					41000J
12	304.8	491AB	492AB					41000AB

## Mounting brackets

Part no.	Type
44008	Neck Bracket
44007A	Trunnion bracket

## Clevis

Part no.	Thread
4303A	3/8" BSF

## Repair kits

Cylinder No.	Kit No.
40400 40410	491R
41400 41410	491R
491 492	491R
41000	41000R

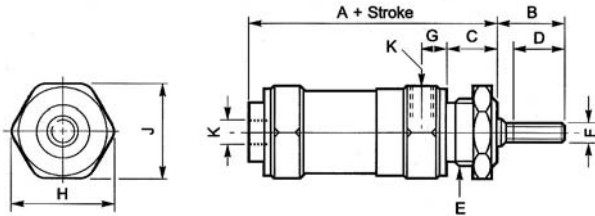
# Midget cylinders

# Dimensions

## 1" Midget cylinders

### Series 491 - double acting, neck mounted cylinders

Dimensions (ins. mm)



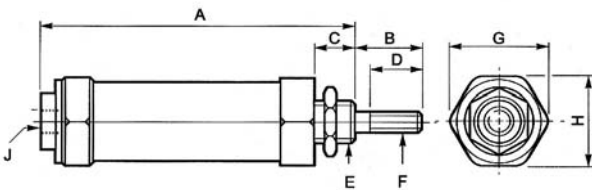
A	B	C	D	ØE
2.5/8"	1.1/16"	11/16"	1"	1"-16 BS
67mm	27mm	18mm	25mm	conduit

ØF	G	ØF	J A/F	K
3/8"-20 BSF	13/32" 10mm	1.7/16" 37mm	1.5/16" 34mm	G1/8"

Metric rod threads available on request. Neck nut (#491-5) supplied with cylinder.  
Metric equivalent sizes are approximate and should be used for reference only.

### Series 40400 - single acting, spring retract, neck mounted cylinders

Dimensions (ins. mm)



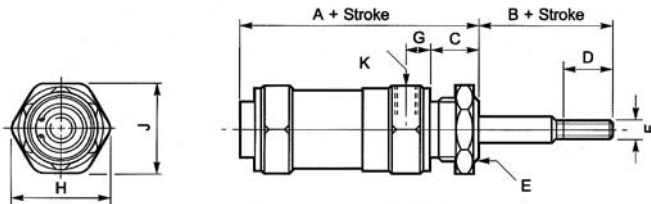
A	B	C	D
1/2" to 1.1/2" = Stroke + 2.5/16"	1"	5/8"	3/4"
13mm to 38mm = Stroke + 59mm			
2" to 3" = Stroke + 2.13/16"	25mm	16mm	19mm
15mm to 76mm = Stroke + 72mm			

ØE	ØF	G	H	J
5/8"-18 UNF	3/8"-20 BSF	1.7/16" 37mm	1.5/16" 34mm	G1/8"

Metric rod threads available on request. Neck nut (#40400-D5) supplied with cylinder.  
Metric equivalent sizes are approximate and should be used for reference only.

### Series 41400 - single acting, spring extend, neck mounted cylinders

Dimensions (ins. mm)



A	B	C	D	ØE
2.15/16"	1"	11/16"	3/4"	1"-16 BS
75mm	25mm	17mm	19mm	conduit

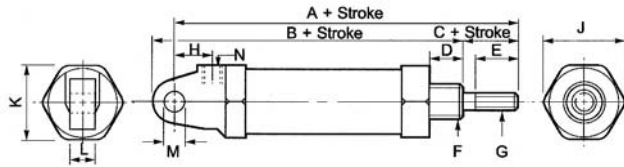
ØF	G	H	J A/F	K
3/8"-20 BSF	31/32" 10mm	1.7/16" 37mm	1.5/16" 34mm	G1/8"

Metric rod threads available on request. Neck nut (#491-5) supplied with cylinder.  
Metric equivalent sizes are approximate and should be used for reference only.

# Dimensions

# Midget cylinders

## Series 40410 - single acting, spring retract, trunnion mounted cylinders



### Dimensions (ins. mm)

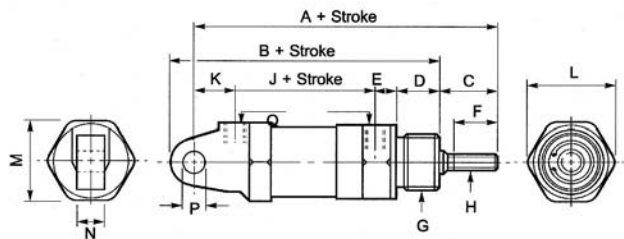
A	B
1/2" to 1 1/2" = stroke + 3.15/16"	1/2" to 1 1/2" = stroke + 3.5/16"
13mm to 38mm = stroke + 100mm	13mm to 38mm = stroke + 84mm
2" to 3" = stroke + 4.7/16"	2" to 3" = stroke + 3.13/16"
51mm to 76mm = stroke + 113mm	51mm to 76mm = stroke + 97mm

C	D	E	ØF	ØG	H
1"	5/8"	3/4"	5/8"-18UNF	3/8"-20BSF	3/4"
25mm	16mm	19mm			19mm

J	K	L	ØM	N
1.7/16"	1.5/16"	1/2"	3/8"	G1/8"
37mm	34mm	13mm	9.5mm	

Metric rod threads available on request.  
Neck nut (#40400-D5) supplied with cylinder.  
Metric equivalent sizes are approximate and should be used for reference only.

## Series 41410 - single acting, spring extend, trunnion mounted cylinders



### Dimensions (ins. mm)

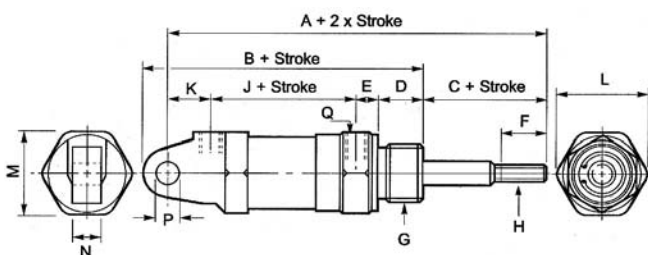
A	B	C	D	E	F
4.1/2"	3.29/32"	1"	11/16"	13/32"	3/4"
114mm	99mm	25mm	17mm	10mm	19mm

ØG	ØH	J	K	L
1"16BS conduit	3/8"-20BSF	1.11/16"	3/4"	1.7/16"
		43mm	19mm	37mm

M	N	ØP	Q
1.5/16"	1/2"	3/8"	G1/8"
34mm	13mm	9.5mm	

Neck nut (#40400-D5) supplied with cylinder.

## Series 492 - double acting, trunnion mounted cylinders



### Dimensions (ins. mm)

A	B	C	D	E
4.5/16"	3.5/8"	1.1/16"	11/16"	13/32"
110mm	92mm	27mm	18mm	10mm

F	ØG	ØH	J	K
1"	1"-16BS conduit	3/8"-20BSF	1.3/8"	3/4"
25mm			35mm	19mm

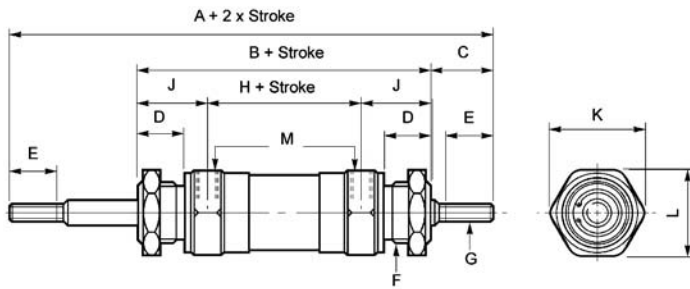
L	M	N	ØP	Q
1.7/16"	1.5/16"	1/2"	3/8"	G1/8"
37mm	34mm	13mm	9.5mm	

Metric rod threads available on request.  
Neck nut (#491-5) supplied with cylinder.  
Metric equivalent sizes are approximate and should be used for reference only.

# Midget cylinders

# Dimensions

## Series 41000 - double acting, through rod, neck mounted cylinders



### Dimensions (ins. mm)

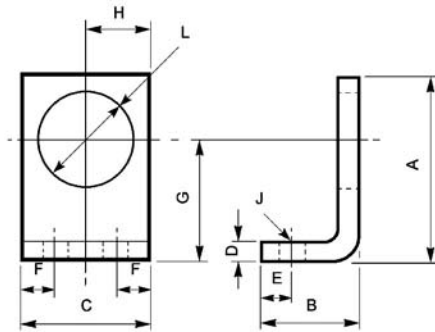
A	B	C	D	E	ØF
5.9/16"	3.9/16"	1"	11/16"	3/4"	1"-16BS
142mm	90mm	25mm	18mm	19mm	conduit

ØG	H	J	K	L A/F	M
3/8"-20BSF	1.3/8"	1.3/32"	1.7/16"	1.5/16"	G1/8"
	35mm	28mm	37mm	34mm	

Metric rod threads available on request.  
Neck nut (#491-5) supplied with cylinder.  
Metric equivalent sizes are approximate  
and should be used for reference only.

## Neck mounting bracket



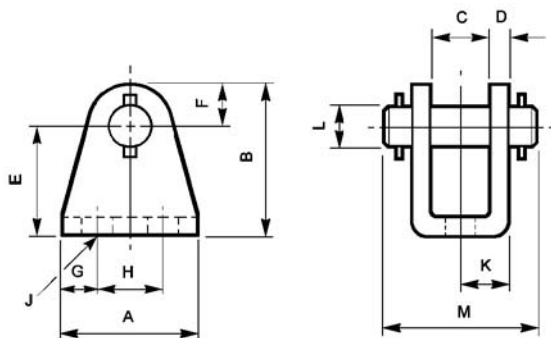
### Dimensions (ins. mm)

A	B	C	D	E
1.29/32"	1"	1.5/16"	11/64"	5/16"
49mm	25mm	34mm	5mm	8mm

F	G	H	ØJ	ØL
11/32"	1.1/4"	21/32"	9/32"	1"
9mm	32mm	17mm	7mm	25mm

## Trunnion mounting bracket



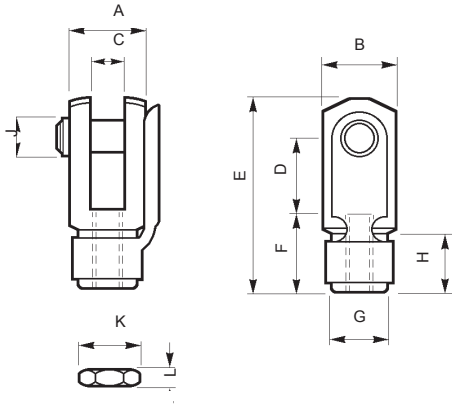
### Dimensions (ins. mm)

A	B	C	D	E	F
1.1/4"	1.3/8"	33/64"	11/64"	1"	3/8"
32mm	35mm	13mm	5mm	25mm	10mm

G	H	ØJ	K	ØL	M
5/16"	5/8"	9/32"	7/16"	3/8"	1.5/16"
8mm	16mm	7mm	11mm	9.5mm	34mm

## Clevis assemblies



## Spring fix clevis Dimensions (ins. mm)

Part no.	thread	A	B	C
4303A	3/8" BSF	26	19	9.7 <sup>+0.10</sup> <sub>-0.05</sub>

Part no.	D	E	F	ØG	H
4303A	20	52	20	18	15

Part no.	ØJ	K A/F	L
4303A	9.5	15	5