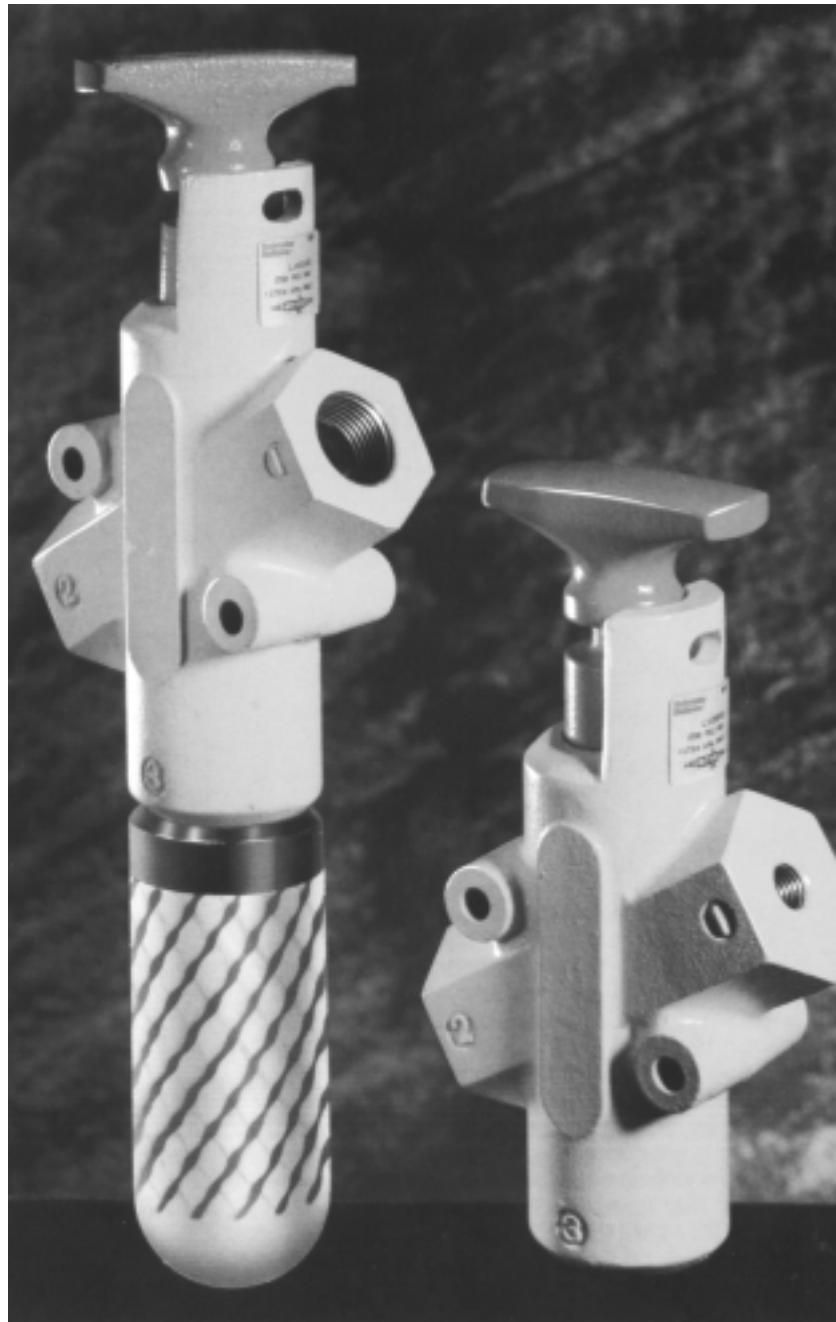


## ***Lockout Valves***

*Pneumatic system isolator  
valves with locking facility*



Quality  
Endorsed  
Company  
ISO 9001  
Lic 0689  
Standards  
Australia

# Lockout Valves



## Mounting

Valves can be inline mounted or surface mounted using the two 8.7mm mounting holes provided in the valve body. Mount valves in plain view with the handle orientated for accessibility.

## Operation

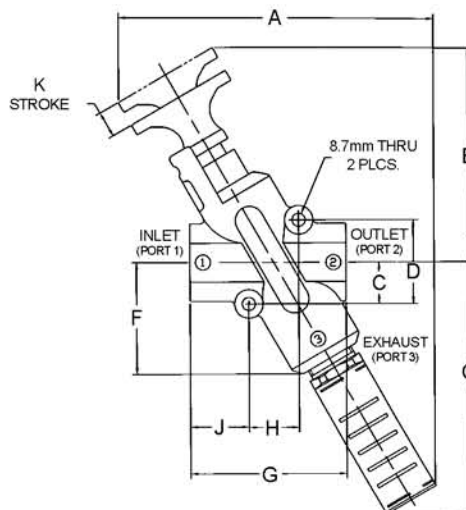
Normal Machine Operation - With the handle pulled outward. Inlet port 1 is open to outlet port 2. Exhaust port 3 is blocked.

Lockout Operation - With the handle pushed inward. Inlet port 1 is blocked. Outlet port 2 is open to exhaust port 3.

## Features

- Used in systems for compliance with OSHA Standard 29 CFR Part 1910
- G1/4 to G1.1/4 port size
- Cv's from 3.0 to 19.7
- High flow exhaust ports
- Rugged cast aluminium alloy body
- Inline or surface mounting
- Safety yellow and red for high visibility
- Detented spool
- Exhaust port threaded for silencer or piped exhaust

## Dimensions (mm)



## Application

Lockout valves are installed in pneumatic drop legs, or individual pneumatic control lines (see figure 1.) In accordance with OSHA procedures, lockout valves are used during maintenance and service procedures of pneumatically (air) operated equipment. Prior to servicing, the red handle is pressed inward, blocking supply and relieving all downstream air pressure.

A padlock is installed through the locking hasp, preventing accidental actuation during the maintenance procedure. Following maintenance, the padlock is removed and the red handle is pulled outward, returning air pressure to the system. (For complete lockout/tagout procedures, consult OSHA standard 29 CFR part 1910 in U.S. Federal Register /Vol. 54 no. 169, Friday, September 1, 1989/Page 36644).

## Dimensions (mm)

In & Out Ports	A	B	C	D	E	F	G	H	J	K	L	Exhaust Port
G1/4-G1	212	143	169	56	28	75	105	34	39	18	51	G1
G1.1/4	186	168	194	70	35	100	140	44	49	25	57	G1.1/4

## Valve Body Width (mm)

G1/4-G1	L = 51mm
G1.1/4	L = 57mm

## Technical Information

Pressure range : 0 to 17 bar  
 Temperature range (ambient) : 0° to 70°C

## Materials of Construction

Body : Cast Aluminium Alloy  
 Spool : Aluminium  
 Seals : Carboxylated Nitrile  
 Detent Spring : Stainless Steel  
 Grease : Magnalube G

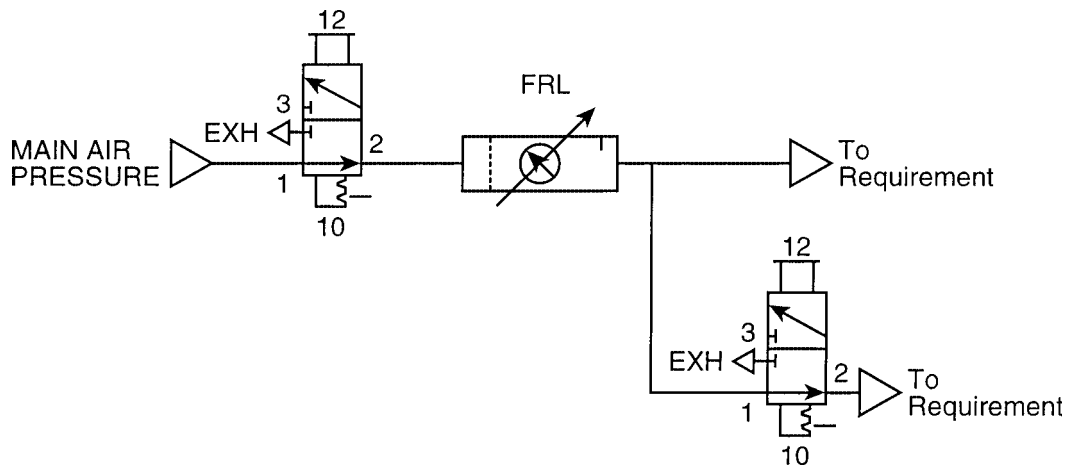
## Flow Coefficiency (C<sub>v</sub>)

Model	1 - 2	2 - 3
LV20BA	3.0	6.0
LV30BA	4.3	9.0
LV40BA	7.7	11.3
LV60BA	9.5	9.0
LV80BA	10.2	8.8
LVABAA	19.7	10.4

## Part Nos

Port Size					
G1/4	G3/8	G1/2	G3/4	G1	G1.1/4
LV20BA	LV30BA	LV40BA	LV60BA	LV80BA	LVABAA

## Sample Lockout Circuit



**Fig 1.**  
 Lockout Valves shown in the  
 Open Position